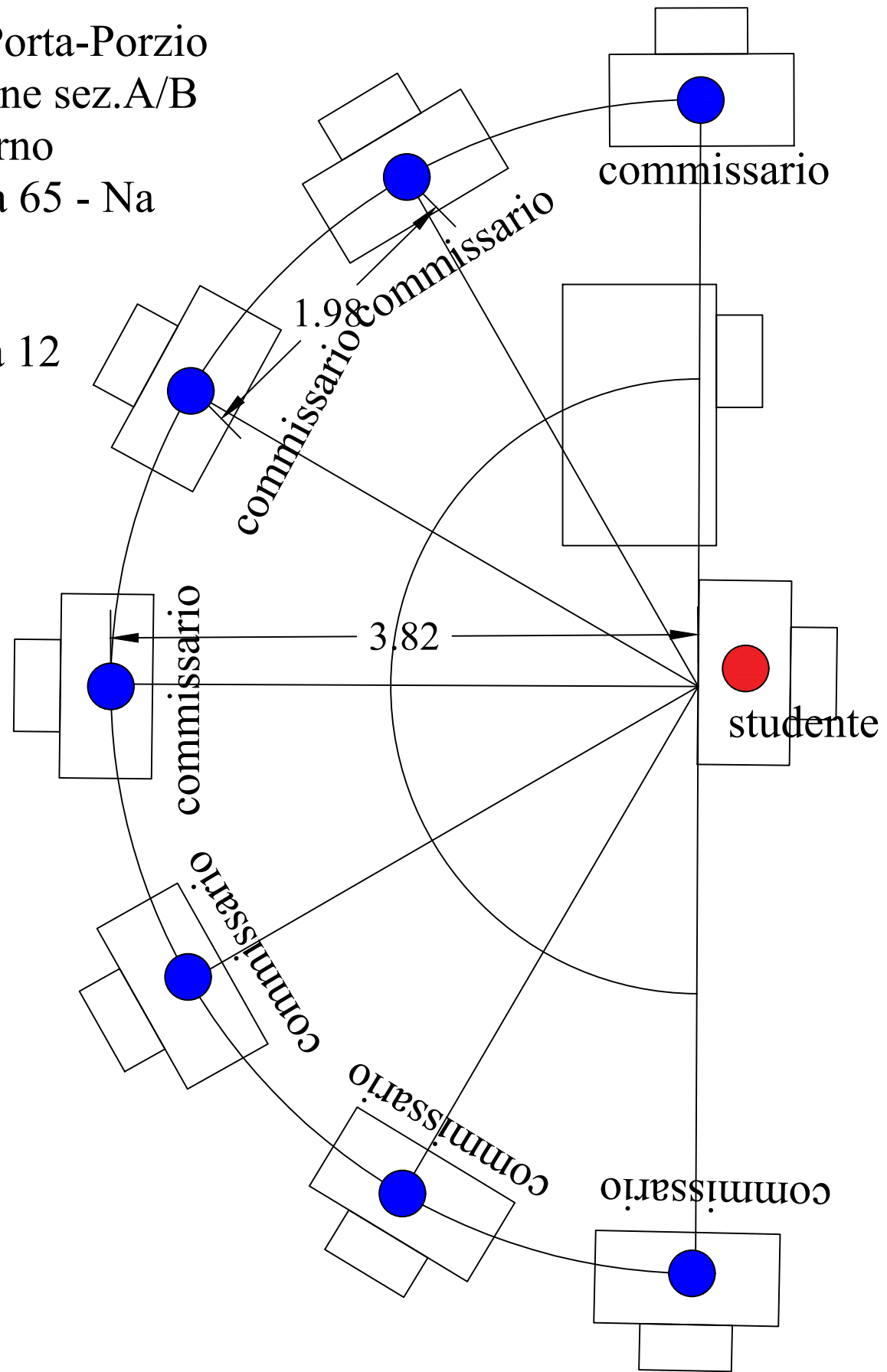


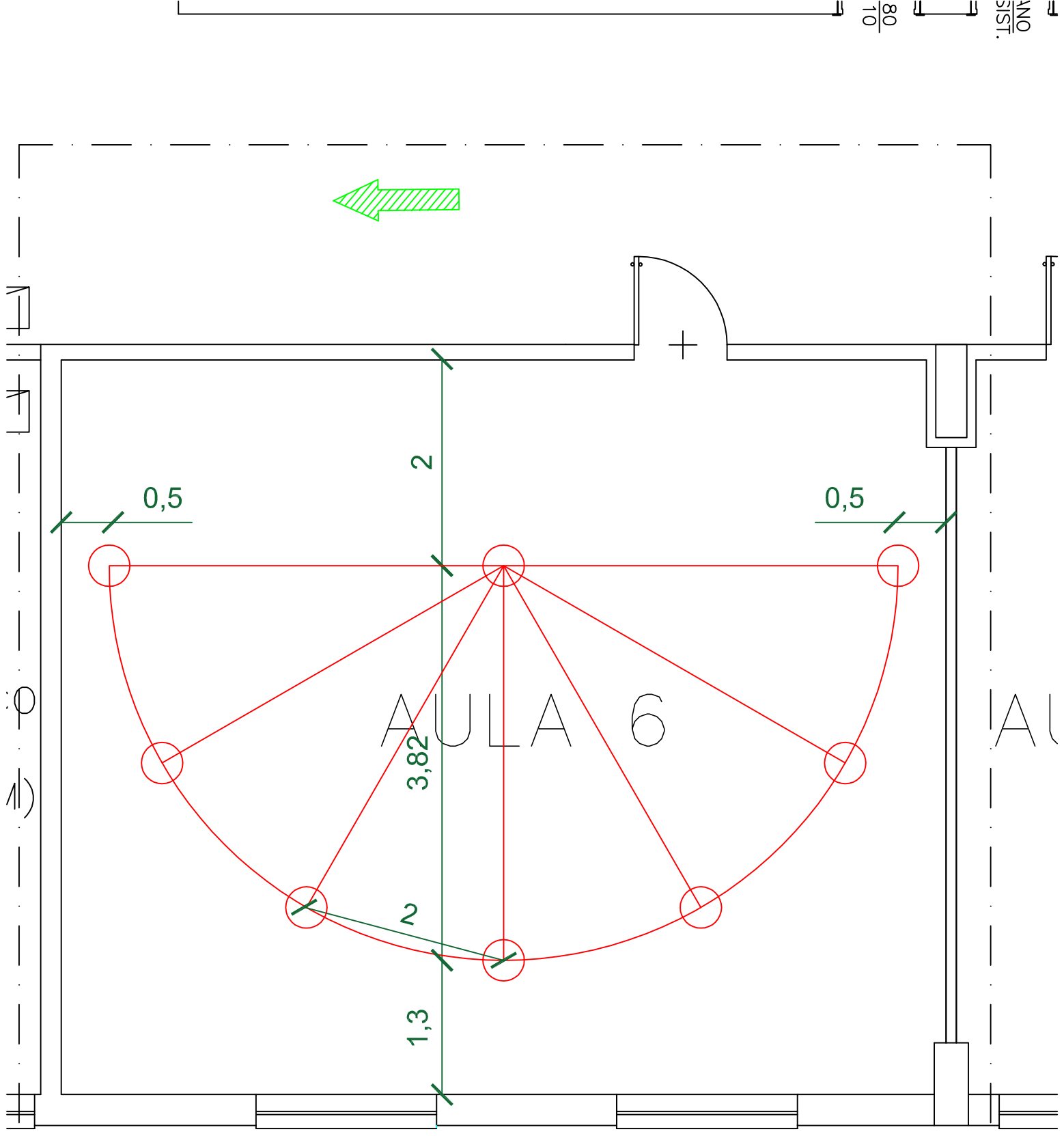
ITG Della Porta-Porzio
Commissione sez.A/B
diurno
Via Foria 65 - Na

aula 12

Ingresso

Ingresso





Piano Terra
Prima Commissione
SERALE sez. A e B

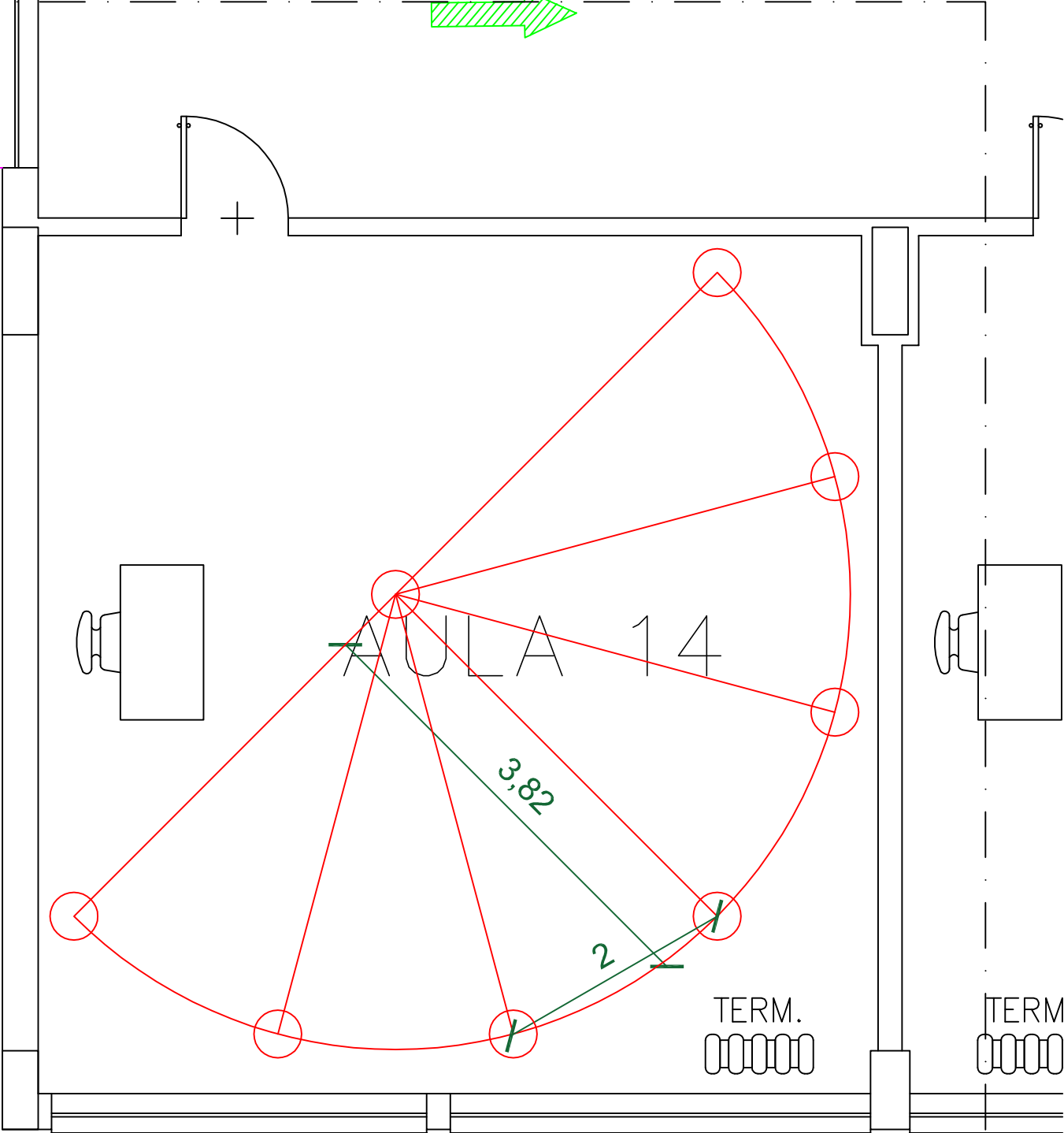
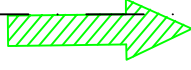


Estintore N.

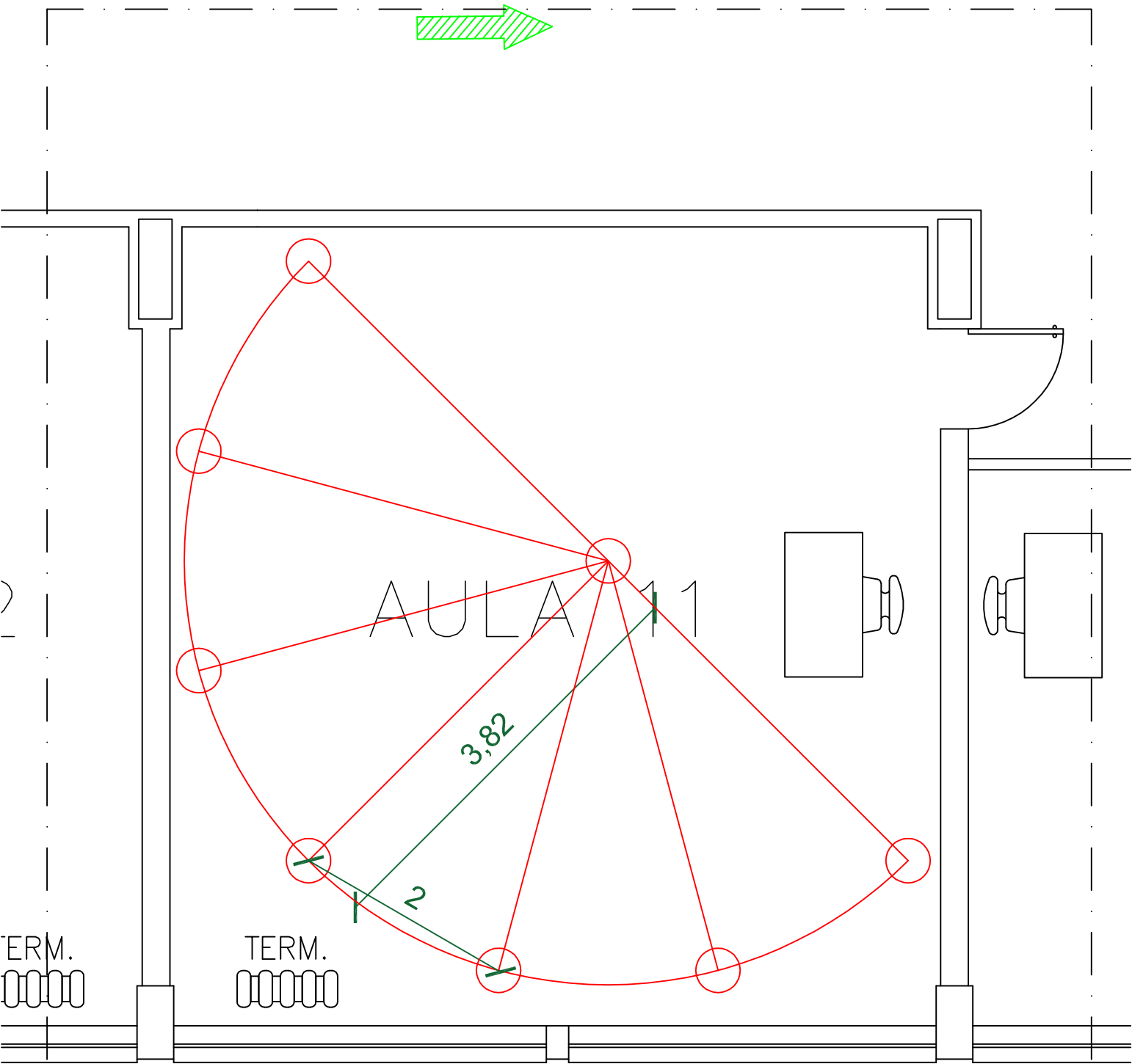
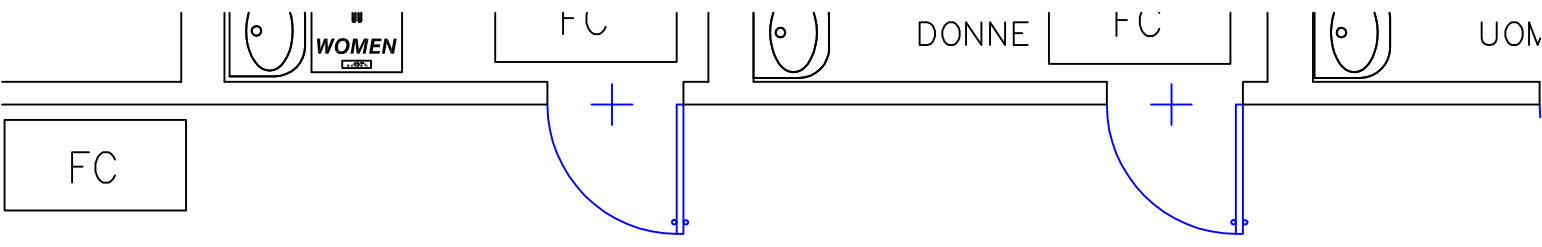
FC



Idrante N.



Piano Primo
 Terza Commissione
 sez. D



Piano Primo
 Seconda Commissione
 sez. E ed F